



**ALASKA DIVISION OF HOMELAND
SECURITY & EMERGENCY MANAGEMENT**
SITUATION REPORT
25-21• January 21, 2025



Toll-Free 1.800.478.2337

Anchorage Area 907.428.7000

SEOC 907.428.7100

<p><u>SEOC Preparedness Level</u> Level 1-Routine Operations</p>	<p>http://ready.alaska.gov</p>	<p><u>National Terrorism Advisory System:</u> Read the NTAS Bulletin here</p>
<p><u>Maritime Security (MARSEC)</u> Level:1- Minimum Appropriate Security Measures</p>	<p>WHO Novel Coronavirus Pandemic (COVID-19): 2019 Novel Coronavirus</p>	<p><u>Alaska Military Installation Force Protection</u> <u>Level:</u> FPCON Bravo</p>

(Significant changes from previous situation reports are red.)

Significant Issues:

None

Department of Health (DOH):

For current information, see: <https://health.alaska.gov/dph/Pages/default.aspx>
<https://health.alaska.gov/dph/Emergency/Pages/prepared/default.aspx>

NTAS Bulletin:

The U.S. Department of Homeland Security issued an updated National Terrorism Advisory Bulletin on May 24, 2023. The current and expired bulletins can be viewed at the below link.
<https://www.dhs.gov/national-terrorism-advisory-system>

Travel Alerts and Conditions:

For current driving conditions, dial 511 or visit: <https://511.alaska.gov/>

Barry Arm Landslide / Tsunami Risk:

For the latest information on the Barry Arm Landslide and Tsunami risk, click here:
<https://diggs.alaska.gov/hazards/barry-arm-landslide.html>

Earthquakes:

United States Geological Service (USGS) Earthquake Information: <http://earthquake.usgs.gov/>
National Tsunami Warning Center: <http://tsunami.gov/>

Alaska Volcanoes:

Great Sitkin Alert Level: Watch and Aviation Color Code: **Orange**
Mt. Spurr Alert Level: Advisory and Aviation Color Code: **Yellow**
For Alaska Volcano updates, go to: <https://www.avo.alaska.edu/>

Air Quality Index (AQI) Advisories:

For the most up-to-date Air Quality Index Advisories:

<http://dec.alaska.gov/Applications/Air/airtoolsweb/Home/Index>

Spills of Oil and Hazardous Substances:

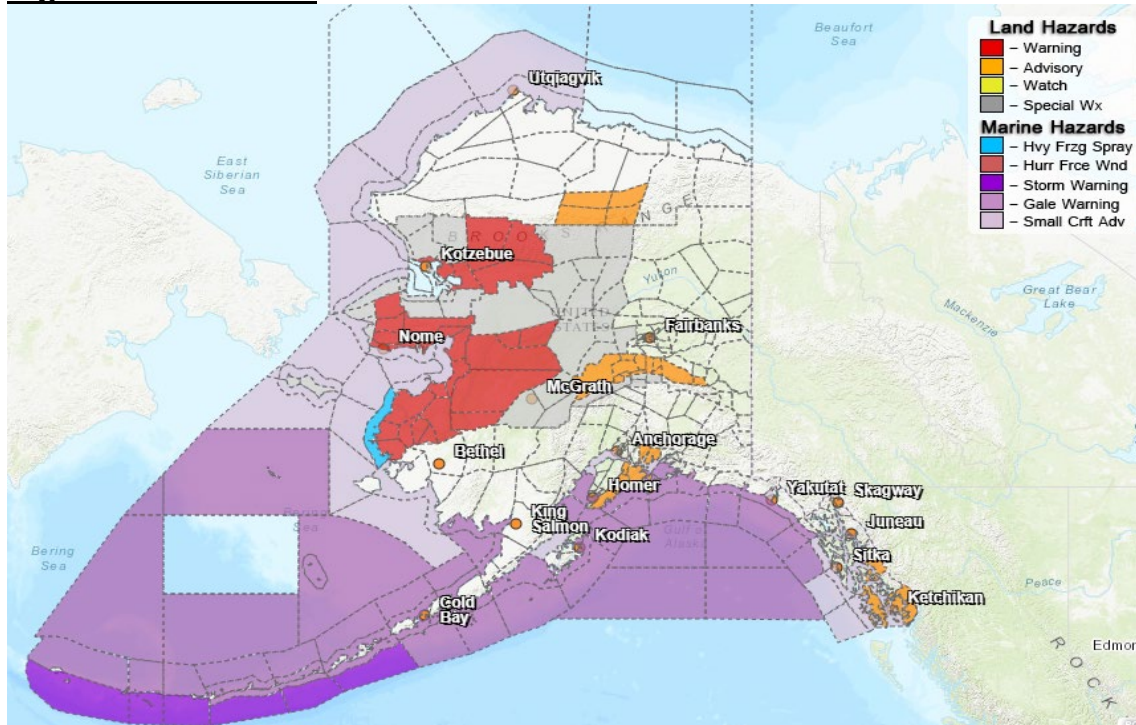
The Alaska Division of Environmental Conservation (ADEC) Spill Prevention and Response page is located at: <https://dec.alaska.gov/spar/>

Alaska Cyber Security Information:

State Employees may sign up for cybersecurity notifications and alerts at:

<https://oit.alaska.gov/security>

Significant Weather:



Special Weather Statement:

- **South Slopes of the Western Brooks Range, Noatak Valley, Kivalina and Red Dog Dock, Lower Kobuk Valley, Baldwin Peninsula, Northern Seward Peninsula, Upper Kobuk Valleys, Shishmaref, Bering Strait Coast, Southern Seward Peninsula Coast, Interior Seward Peninsula, Eastern Norton Sound and Nulato Hills, Yukon Delta Coast, Lower Yukon River, St Lawrence Island, Lower Koyukuk Valley, Middle Yukon Valley, Lower Yukon and Innoko Valleys, North Slopes of the Western Alaska Range, Upper Kuskokwim Valley-storms continuing across western Alaska.**
- **South Slopes of The Central Brooks Range, Upper Koyukuk Valle, Dalton Highway Summits, Central Interior, Northern Denali Borough, Southern Denali Borough-heavy snowfall and rain likely for Central Interior.**

Winter Weather Advisory:

- **Central Brooks Range- in effect until noon Wednesday.**
- **Western Prince William Sound- in effect from 9am to 9pm.**

Wind Advisory:

- **Northern Denali Borough, Eastern Alaska Range Noth of Trims Camp-in effect until noon Wednesday.**

Winter Storm Warning:

- **Southern Seward Peninsula Coast, Interior Seward Peninsula-in effect until 6pm**

Wednesday.

- **South Slopes of the Western Brooks Range, Upper Kobuk Valleys**-in effect until 6pm

Wednesday.

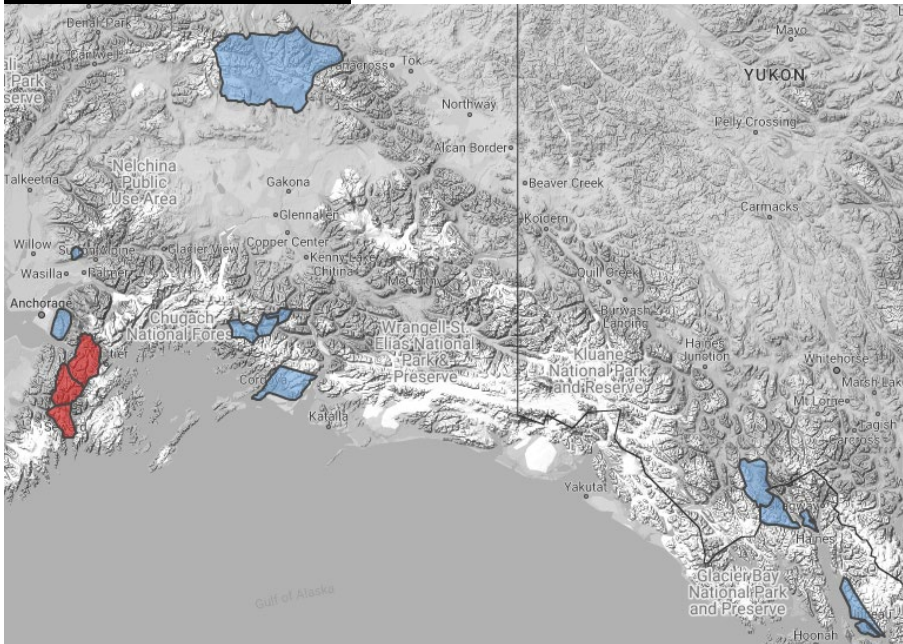
Dense Fog:

- **Petersburg Borough, Prince of Wales Island, Ketchikan Gateway Borough**-in effect until 9am.

For more information and the most current Weather, Watches/Warning/Advisories go to:

<https://www.weather.gov/arh/>

Avalanche Conditions:



Summit Lake – Moderate below 1,000', Considerable between 1,000'-2,500', High above 2,500'.

Turnagain Pass – Moderate 1,000', Considerable between 1,000'-2,500', High above 2,500'.

Seward and Lost Lake- Moderate 1,000', Considerable between 1,000'-2,500', High above 2,500'.

Valdez Maritime, Intermountain, and Continental–Considerable at all levels.

For more information and the most current avalanche conditions, go to: <https://alaskasnow.org/>

The Next Situation Report will be on **January 22, 2025**. An interim report will be prompted by a significant change in the situation or the threat level. This report is posted on the internet at

<https://ready.alaska.gov/sitrep>.

To register for email distribution, PLEASE go to:

<http://list.state.ak.us/mailman/listinfo/dhsem.situation.report>.

Direct questions regarding this report to the SEOC at 907-428-7100 or seoc@alaska.gov.